



 **Pax-i**

Your Partner
in Digital Success

Your Partner in Digital Success, PaX-i

1

Superior Image Quality

- Optimal image for accurate diagnosis

2

Two Built-in Sensors

- Specialized sensors for Pano & Ceph
- Streamlined workflow and prolonged lifespan of sensors

3

User-friendly Software, EzDent

- It is the complete solution for your consultations

4

Modern and Compact Design

- Raise design value of your clinic
- Save installation space in your practice



ADVANCED IMAGE SOLUTION FOR ACCURATE DENTAL DIAGNOSIS

PaX-i provides the most precise and high quality panoramic image by combining imaging processing and accumulated experience in dental imaging from VATECH. It improves your diagnostic accuracy with increased treatment planning and patient satisfaction.



New standard of panoramic image

Clear and sharp panoramic image brings you better diagnostics. Enhanced details especially in the anterior and dental roots can be viewed. These consistently high quality images will become the new standard of panoramic imaging.



TWO BUILT-IN SENSORS

PaX-i offers two dedicated and embedded sensors for Pano and Ceph.

It not only allows you to capture an optimal image from each sensor but it also makes your workflow faster.

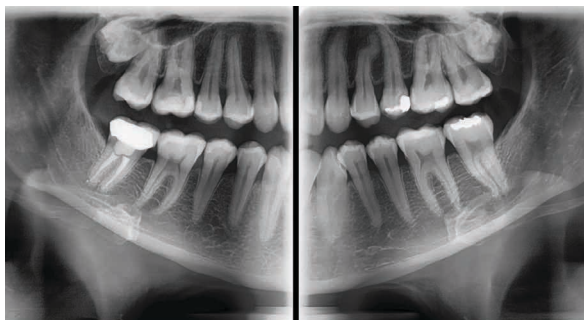
Ceph Sensor

Pano Sensor

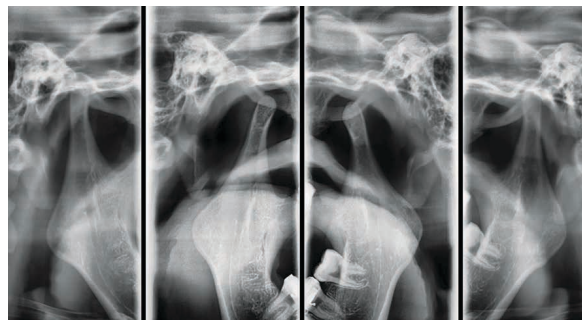
Make your diagnosis easy and efficient with various capture modes

PaX-i has various capture modes to meet your diagnostic needs.

You can choose any capture mode based on your diagnostic needs.



Bitewing mode



TMJ mode

SELECTION	ARCH	EXAMINATION MODE
PANO EXAMINATION	Narrow / Normal Wide / Child	Standard / Right / Front / Left
	Orthogonal	Orthogonal Standard / Right / Front / Left Bitewing Standard / Right / Front / Left
SPECIAL EXAMINATION	Normal	TMJ LAT Open / Close TMJ PA Open / Close Sinus LAT / PA

ADVANCED IMAGE SOLUTION FOR ORTHODONTIC DIAGNOSIS

EXTENDED DIAGNOSTIC VALUE FOR WIDE INSIGHT

Cephalometric (Scan Ceph)

The PaX-i provides optimal images exclusively designed for orthodontics.

There are two image sizes available, Lateral and Full Lateral, allowing you choose your image size based on your diagnostic needs.

LATERAL



LATERAL

Provide specialized high quality images to suit orthodontics and maxillofacial surgeries.

FULL LATERAL



FULL LATERAL

Full lateral image size is 30% wider and shows the occipital area of the patient, which enables comprehensive diagnosis.

Examination Program	Scan Time (sec.)	Image Size
LATERAL	12.9	21X23cm (8.3X9.1")
FULL LATERAL	16.9	27X23cm (10.6X9.1")



ONE SHOT CEPH

With One Shot Ceph, you can acquire high quality images with low X-ray dosage. Plus, short scan time markedly reduces motion artifacts.

Cephalometric (One Shot type)

Superior image quality will be delivered using the a-Si TFT sensors.

Three different ceph image sizes reduce unnecessary X-ray dosage and scans the ideal area of cranial anatomy for your diagnosis and treatment planning.

LATERAL

30X25cm (12X10")



OP (One Shot Premium)

PA



Carpus



SMV (Submentovertebral)



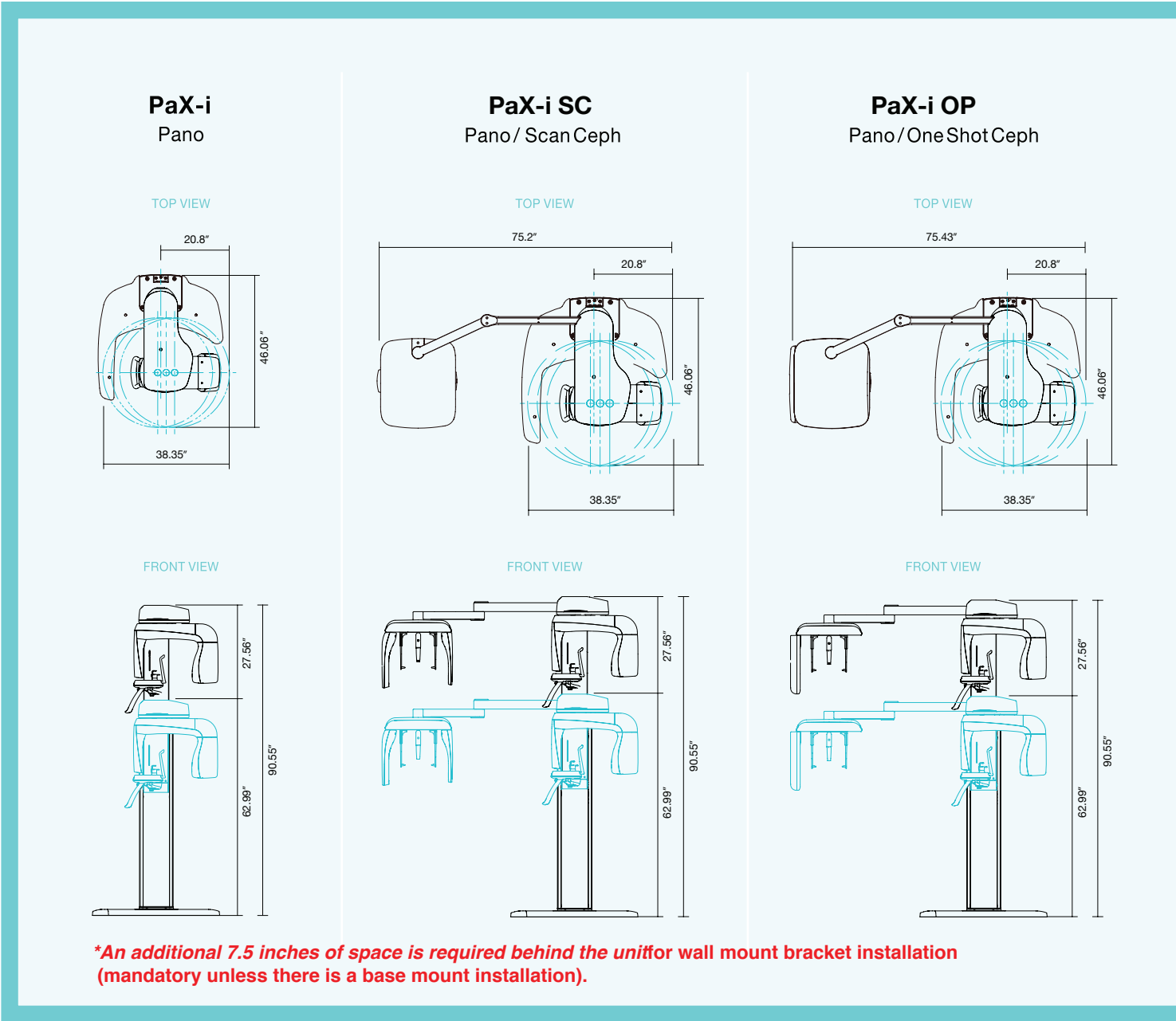
PRODUCT CONFIGURATION

	PANO	CEPH	
		SCAN	ONE SHOT
PaX-i	•	—	—
PaX-i SC	•	•	—
PaX-i OP	•	—	•

SPECIFICATION (PaX-i : PCH-2500)

Function	Pano + Ceph	Ceph FOV Size	SC 8.3"X9.1" [LAT,PA,SMV,Waters View,Carpus] 10.6"X9.1" [Full LAT]
Scan Time	Pano : HD 13.5sec / Normal 10.1sec Ceph : Scan 12.9sec / One-shot 0.9sec		OP 12X10" [LAT,PA,SMV,Waters View,Carpus]
Focal Spot	0.5mm	Gray Scale	14 bit
Tube Voltage/ Current	50 - 90 kVp / 4 - 10 mA	Patient Positioning	Standing / Wheel-Chair Accessible

DIMENSIONS



World's Premier Dental Imaging Company

Vatech is a leading manufacturer of radiographic imaging solutions for the medical, dental and veterinary fields with offices in over 70 countries worldwide.



Vatech is a leading provider of digital dental radiography products. As the US subsidiary of Vatech Inc., Vatech America is dedicated solely to innovative digital dental X-ray imaging technologies that aid dentists and ultimately help improve the health of dental patients. The company is responsible for technological advances in recent years that offer every American dental practice, from small to large, endless possibilities to achieve higher standards.

Worldwide, Vatech, Inc. has 19 branches and 17 technical support centers. Vatech offers the largest variety of digital diagnostic systems run by a single company, offering 7 different dental CT models and 7 different panoramic X-ray systems. Vatech also develops and manufactures its own digital radiographic sensors, the most critical component of diagnostic X-ray systems. Vatech's vertical integration of critical components, including the sensor technology, allows for higher quality control, increased pace of innovation and ultimately greater value to the customer.

A History of World's Firsts

2005	2007	2008	2009	2013
 Launched World-First 3 in 1 Digital X-ray System : Picasso-Trio	 Launched World-First Auto-Switching System : PaX-Duo3D	 World-First One Shot Cephalometric : PaX-Uni3D	 World-First Free FOV System : PaX-Reve3D	 Groundbreaking Low Radiation System: PaX-i3D Green