



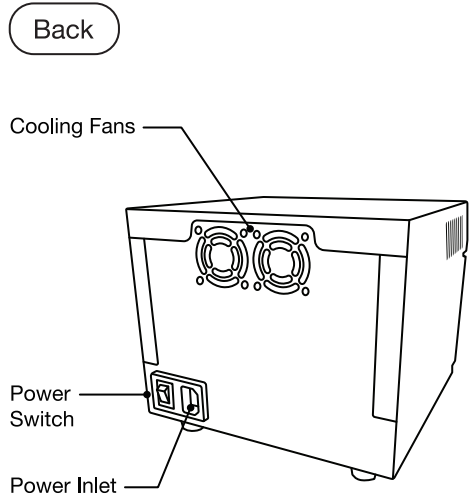
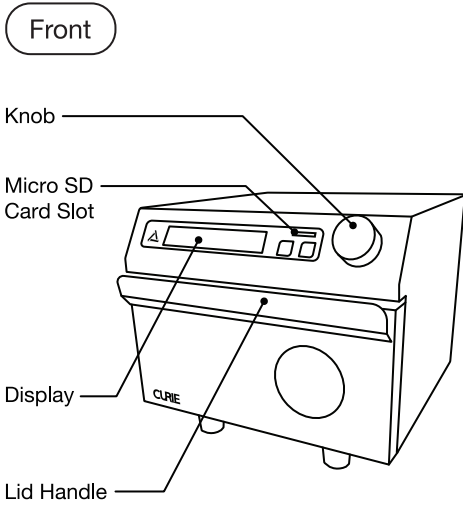
CURIE

Quick Start Guide

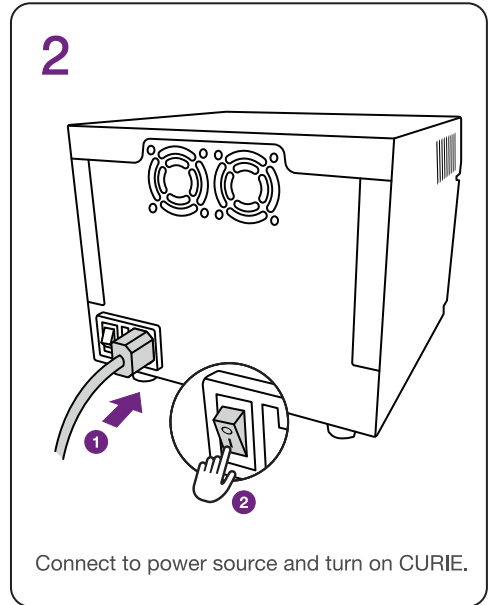
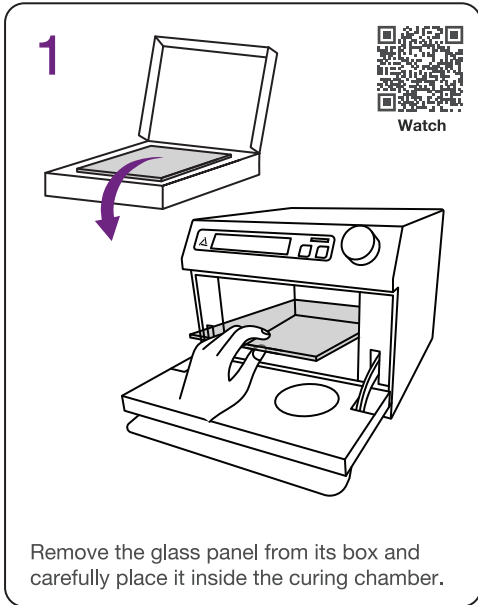


Register Your
Device & Warranty

Product Overview



Setup Guide

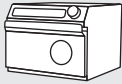


Operate CURIE in an indoor environment with a temperature between 10°-40°C (50°-104°F), humidity between 30-70%, and air pressure 50 kPa-106 kPa.



Keep CURIE away from heat sources and combustible objects.

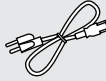
Package Contents



CURE



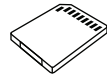
Glass Panel



Power Cable



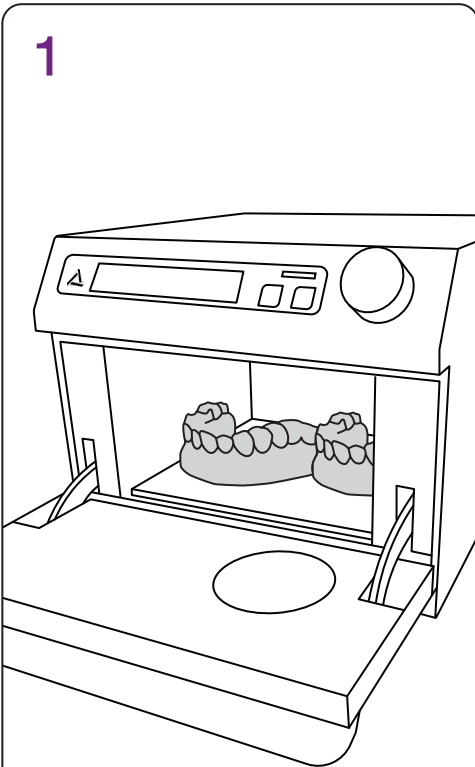
Micro SD Card



Micro SD Card Adapter

Validated Curing Process

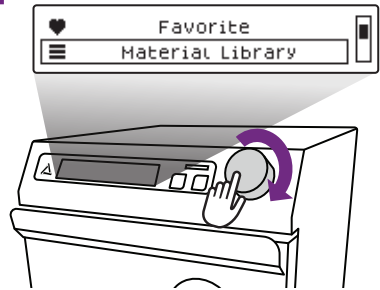
1



 Do not stack applications

Place the applications flat on the glass.

2



Turn and press the knob to select 'Material Library,' select brand, then select resin profile.

3



Press the 'START' button to start the curing process.



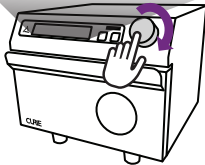
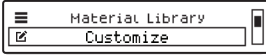
CURE poses a risk of UV radiation exposure. To safeguard against this, always wear appropriate personal protective equipment (PPE) and eye protection whenever using it.

Optional: Using Customized Parameters

1

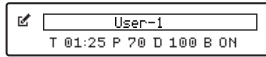


Watch



Turn and press the knob to select 'Customize,' select specific user parameter. You can set up to five curing programs.

2



Turn the knob to select the value you want to edit and press the knob to set the value.

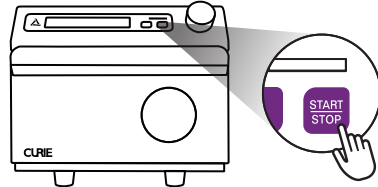
T: Curing Time, the duration of the curing process.

P: Power, the light intensity according to the material characteristics

D: Duty Cycle, the period of illumination per cycle according to the print.

B: Bottom Light

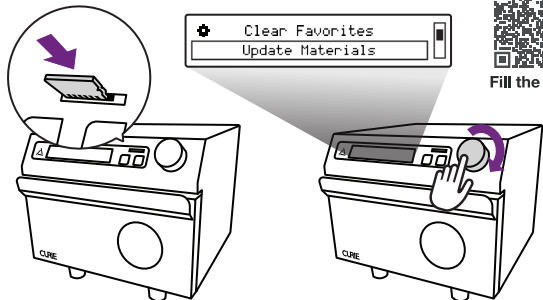
3



Press the 'START' button to start the curing process.

Updating the Material Library

- 1 Scan the QR code and fill out the form to receive the latest material library update.
- 2 Transfer the file (*.DB) onto the SD card.
- 3 Insert the SD card into CURIE.
- 4 Turn and select 'System Settings' > 'Update Materials,' and press and hold the knob for 3 seconds to load the new library.



Fill the Form

Technical Specifications

Dimensions 20 (W) x 22 (D) x 16 (H) cm
7.9 (W) x 8.7 (D) x 6.3 (H) in

UV Wavelength 365, 385, 405 nm

Weight Approx. 3 kg
Approx. 6.6 lbs

Chamber Dimensions 14 (W) x 14 (D) x 8 (H) cm
5.5 (W) x 5.5 (D) x 3.1 (H) in

Power Input 100-240VAC, 50-60Hz

LED Lights 31



ACKURETTA



User Dashboard



Facebook User Group